



**GEL BLOCK**

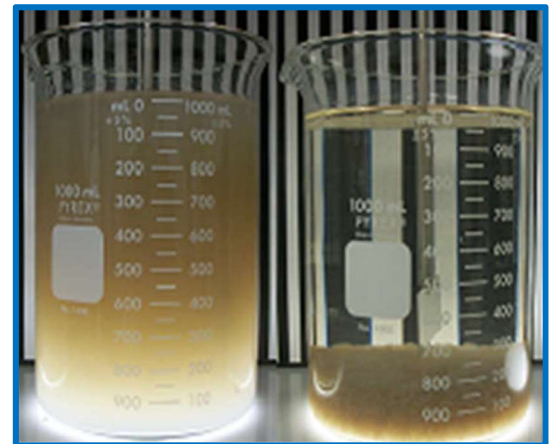


**PASSIVE IN SITU**

The gel block uses flow dynamics along with particle size, shape, and density to release or strip flocculant. It is a passive process, completely self-dosing and self-limiting, dependent only on the characteristics of the water flowing around the block. The velocity for optimal performance should be between 0.3m/s (1 foot/sec) and 1.5m/s (5 feet/sec) with solids content limited to less than 1% or 10000 NTU's. We make-down and age our flocculant at our facilities so it comes in a ready state form. Use it right out of the box.

### FEATURES

- Passive In-situ treatment
- Broad pH range 3-12
- Wide temperature span 4-100°C
- Easily stored
- Environmentally safe
- Self-dosing — Self limiting
- Eliminates Makedown and dosing equipment
- Reduces TSS/NTUs, Metals



**TSS REDUCTION**

